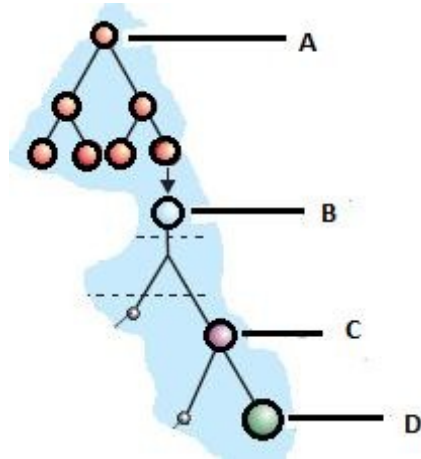
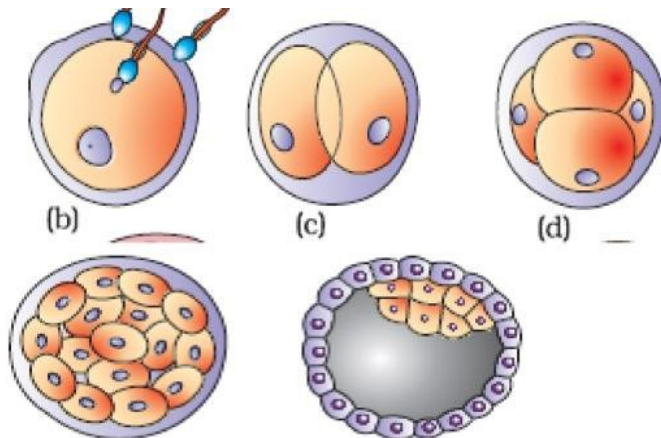


CH 3- HUMAN REPRODUCTION

1. Which cells of embryo have potency to give rise to all tissues and organs?
2. Label A ,B, C and D in the following schematic representation of oogenesis.



3. Identify the stage b, c, d, e and f of embryonic development by looking at the diagrams given below:



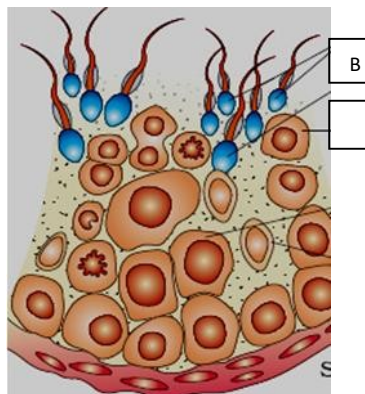
(e)

(f)

What is the name of a cell in stage b and c

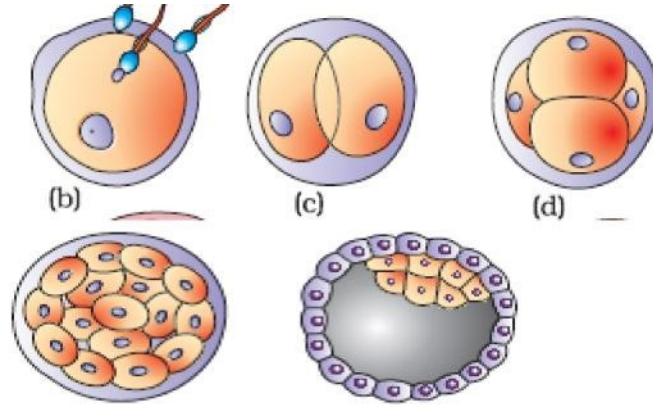
4. Name the cell organelles present in the neck of a human sperm.
5. Which sugar is present in seminal plasma?
6. What is the function of the cells of alveoli in respect to mammary gland?
7. Which structure in an ovary is characterised by a fluid filled cavity called antrum?
8. What is the ploidy of the first and second polar body respectively?
9. Name the tissue which secrete estrogens and progestogens for the maintenance of Pregnancy

1. 10. Study the diagram and answer the following question:



- a) Identify 'A' and 'B'.
- b) Which cell division takes place to form a primary spermatocyte from spermatogonia?
- c) State the function of interstitial cells

1. Identify the stage b, c, d, e and f of embryonic development by looking at the diagrams
3
given below:



(e) (f)
What is the name of a cell in stage b and c