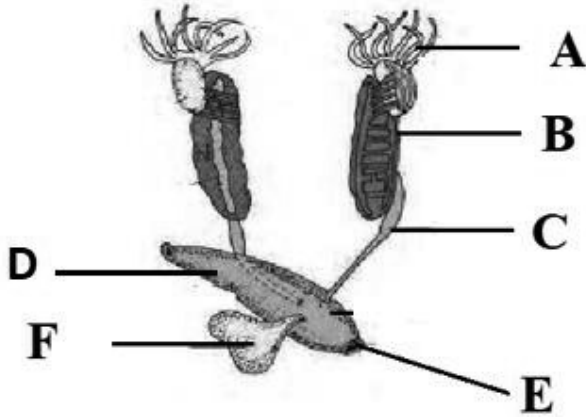


BCM SCHOOL BASANT AVENUE , DUGRI LUDHIANA
ASSIGNMENT
XI BIOLOGY

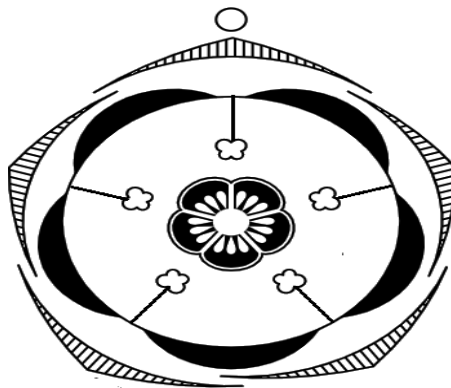
1 Assertion: Mitochondria of active cell has more number of cristae and F₀-F₁ particles.
Reason: F₀-F₁ particles are involved in ATP production

2 Based on the clues given below, identify and name the organ marked in the given figure



- a. Common duct for urine and sperm. b. Common opening for egestion and excretion.
c. Organ which stores urine temporarily. d. Organ which stores undigested food.

3 Given below is a floral diagram.



- a. Identify the aestivation shown in the calyx and corolla of the above flower.
b. Name the type of placentation seen in its ovary. Give example of a flower showing such placentation.
c. Write the floral formula of the given flower.

OR

- b. Enlist four characteristics of its androecium

4 Given below are different sub-stages of prophase I. Match them with their correct feature.

	Column I		Column II
I	Zygotene	i	Formation of bivalent
II	Pachytene	ii	Terminalization of chiasmata
III	Diakinesis	iii	Dissolution of synaptonemal complex
IV	Leptotene	iv	Crossing over mediated by

				recombinase
	V	Diplotene	v	Chromosomes start condensing
		a. I-v, II-i, III-iv, IV-iii, V-ii		b. I-i, II-iii, III-ii, IV-v, V-iv
		c. I-i, II-iv, III-ii, IV-v, V-iii		d. I-v, II-iv, III-ii, IV-i, V-iii
5	Explain different types of aestivation with the support of diagram and examples.			
6	What is placentation? Which are the different types of placentation?			
7	Rearrange the following zones choose the correct option as seen in the root in vertical section and choose the correct option (A) Root hair zone (B) Zone of meristems (C) Root cap zone (D) Zone of Maturation (E) Zone of elongation			
8	Seeds of some plants germinate immediately after shedding from the plants while in other plants they require a period of rest before germination. The later phenomena is called as dormancy. Give the reasons for seed dormancy and some methods to break it.			