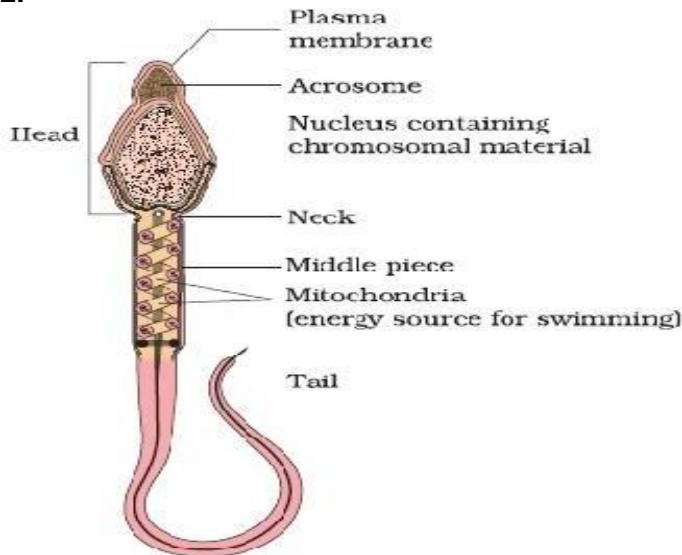


1. a. Secretions of these glands constitute the seminal plasma which is rich in fructose, calcium and certain enzymes.
 b. LH acts at the Leydig cells and stimulates synthesis and secretion of androgens.
- 2.



3. Zygote, 2 celled stage, 4 celled stage, Morula, blastocyst, blastomere
 4. a. ampullary-isthmic junction b. Stem cells c.(i) To produce female gametes (ovum) by oogenesis. c.(ii) To secrete estrogen and progesterone d. One egg e. Oxytocin

5.a. The scrotum helps in maintaining the low temperature of the testes (2–2.5°C lower than the normal internal body temperature) necessary for spermatogenesis.

b.

S. No.	Spermatogenesis	Oogenesis
1	Occur in testes.	Occur in ovaries.
2	growth phase is short	growth phase is very long
3	A spermatogonium produces four functional	An oogonium produces one functional ovum and three non-