

BCM SCHOOL
BASANT AVENUE, DUGRI ROAD, LUDHIANA
Class VII SCIENCE
Assignment

General Instructions:

1. Q. 1 to 3 are multiple choice type questions carries 1 mark each.
2. Q.4 to 5 are Assertion- Reason type questions carries 1 mark each.
3. Q.6 is very short answer type question carries 2 marks.
4. Q. 7 is short answer type question carries 3 marks.
5. Q. 8 to 9 are long answer type questions carries 5 marks each.
6. Q. 10 is Case Study based question.

Tick the correct option

1. While preparing chapatis, Chinky found that the flour to be used was mixed with wheat grains. Which out of the following is the most suitable method to separate the grains from the flour?

- (a) Threshing. (b) Sieving. (c) Winnowing (d) Filtration

2. Lila observed that a pond with clear water was covered up with green algae within a week. By which method of reproduction did the algae spread so rapidly?

- (a) Budding (b) Sexual reproduction (c) Fragmentation (d) Pollination

3. Pollination refers to the:

- (a) transfer of pollen from anther to ovary
(b) transfer of male gametes from anther to stigma
(c) transfer of pollen from anther to stigma
(d) transfer of pollen from anther to ovule

The questions (4-5) below consist of an assertion and a reason. Use the following key to choose the appropriate answer.

- (a) Both A and R are true and R is the correct explanation of A.
(b) Both A and R are true but R is not the correct explanation of A.
(c) A is true but R is false.
(d) A is false but R is true

4. Assertion (A) : Parts of pistil are anther and filament.

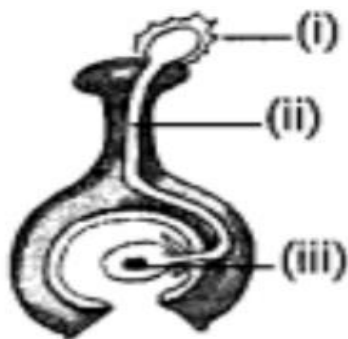
Reason (R) : Bisexual flowers are those which contain both stamen and pistil.

5. Assertion (A): It is fatal to touch a live wire with bare feet and uncovered hands.

Reason (R): The electric current passes through the body to the earth forming a circuit and burns the blood

6. why are electrical wires typically made of metal like copper?

7. In the figure given below, label the part marked (i), (ii) and (iii)



8. A) What will happen if all seeds of a plant were to fall at the same place and grow there?

B) Explain reproduction through spore formation in fungus.

9.A)On what factors does the heat produced in a wire depend?

B) Boojho made an electromagnet by winding 50 turns of wire over an iron screw. Paheli also made an electromagnet by winding 100 turns over a similar iron screw. Which electromagnet will attract more pins? Give reason.

10. Case Study

Ravi boiled water in a kettle. As the water reached boiling point, steam rose and collected on the kitchen window, forming water droplets. He noticed that the water level in the kettle kept reducing. His elder sister explained the concepts of evaporation and condensation.

1.Name the phenomena responsible for the disappearance of hand sanitizer as we rub it on our hands

2. What is the scientific principle behind the use of earthen pots made of sand and clay during the summers?

3. Why do clothes tend to dry faster on a sunny and windy day?