

Q9

L. Anatropous ovule **Explanation:**

M. In an **anatropous ovule**, the body of the ovule bends over completely and fuses with the funicle, making ovule appear **inverted**.

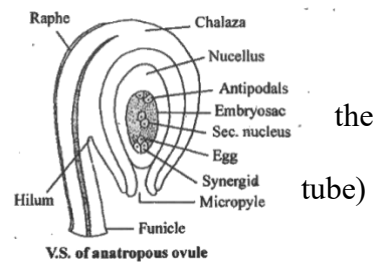
N. As a result, the **micropyle** (entry point for pollen comes to lie **close to the hilum**, near the funicle.

O. The **chalaza** remains at the opposite end of the micropyle.

P. The **embryo sac** inside the ovule is oriented such that the **egg apparatus (egg cell and synergids)** is near the micropyle, and the **antipodal cells** are located near the chalazal end—thus maintaining **correct polarity** despite the inversion.

Q. One egg cell and two synergid cells.

R. Pollen tube enters the ovule through micropyle



1+1+1

the
tube)

1

1