



ओम्

BCM SCHOOL
SENIOR SECONDARY

BASANT
Avenue



EK BHARAT SHRESHTHA BHARAT

Inter-Disciplinary Project

Class – IX

Wild life Sanctuaries of Odisha



NOTE:

WORK IS TO BE SUBMITTED BETWEEN JULY 13, 2023 TO JULY 17, 2023.

KINDLY ENSURE TIMELY SUBMISSION.

- ❑ Prepare a PPT on top ten wild life sanctuaries of Odisha. (In English- Minimum 10 slides).

Content to show in slide –

- No. of species in sanctuary
 - Common name of animal
 - Scientific name of animal
 - Picture and any 2 adaptive features of that animal.
- ❑ Make a painting on any wildlife sanctuary of Odisha by choosing any geometrical shape and calculate its area also. (On A-3Size Sheet).
 - ❑ उड़ीसा के किसी एक वाइल्ड लाइफ सैंचुरी की आभासी यात्रा करके अपनी आंखों देखा हाल का वर्णन करते हुए पिताजी को पत्र लिखें।
 - ❑ ਉੜੀਸਾ ਵਿੱਚ ਬਣੇ ਮਸ਼ਹੂਰ ਜੰਗਲੀ ਜੀਵ ਅਸਥਾਨ (ਵਾਇਲਡ ਲਾਈਫ ਸੈਨਚੁਰੀ)' ਦੇ ਵੱਖ- ਵੱਖ ਪ੍ਰਜਾਤੀਆਂ ਦੀ ਸੰਭਾਲ ਦੇ ਕਾਰਜਾਂ ਨੂੰ ਧਿਆਨ ਵਿੱਚ ਰੱਖਦੇ ਹੋਏ ,ਅਲੇਪ ਹੋ ਰਹੇ ਜਾਨਵਰਾਂ ਨੂੰ ਬਚਾਉਣ ਲਈ ਚਿੱਤਰ ਸਹਿਤ A3 ਸ਼ੀਟ 'ਤੇ ਸਲੋਗਨ ਤਿਆਰ ਕਰੋ।
 - ❑ Locate and label the following National parks and Wildlife sanctuaries of Punjab and Odisha on the political map of India.

Punjab

1. Abohar Wildlife Sanctuary
2. Harike Wildlife Sanctuary
3. Jhajjar Bacholi Wildlife Sanctuary
4. Bir Moti Bagh Wildlife Sanctuary

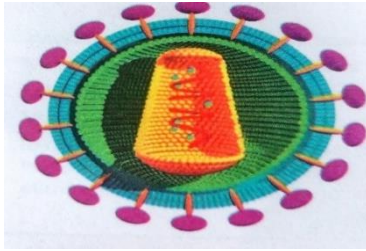
Odisha

1. Chilika Lake National Park
2. Simlipal National Park
3. Debrigarh Wildlife Sanctuary
4. Tikarpada Wildlife Sanctuary

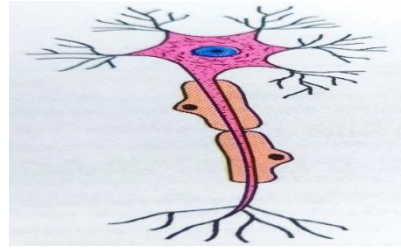
INSTRUCTIONS:

- ❖ All the work should be hand-written.
- ❖ Original drawings / illustrations and creative use of material will be appreciated.
- ❖ Present your work on A-4 size sheets and put it in an attractive folder with your name and class clearly written at the top

6. From the given diagrams below, which of the following is not a type of cell



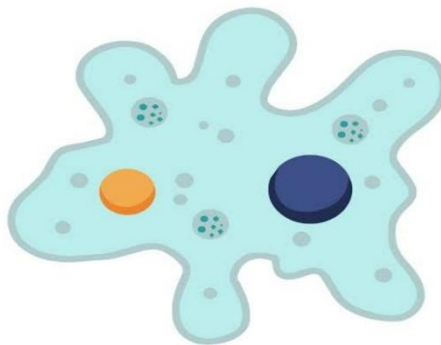
a)



b)



c)



d)

7. In osmosis

- a) solute move through SPM
- b) solvent move through SPM
- c) both solute and solvent move through SPM
- d) solution move through SPM

8. Organelle other than nucleus, containing DNA is

- a) endoplasmic reticulum
- b) mitochondrion
- c) Golgi apparatus
- d) Lysosome

9. What happens if some grapes are placed in Strong salt solution?

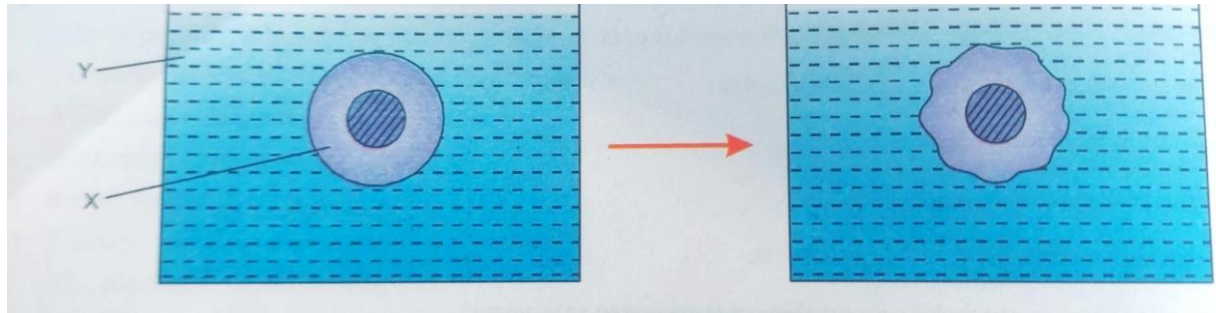
- a) they swell
- b) they shrink
- c) first swell then shrink
- d) nothing happens

10. Who was the first to see free cells like bacteria and protozoa?

- a) R. Hooke
- b) C. Golgi
- c) Leeuwenhoek
- d) T. Boveri

Activity Based Questions

Q1. Observe the diagram and answer the following



- A) Identify the process and solution nature X and Y.
B) _____ allows solvent molecule and only selected solute molecule to pass through it.

Q2. Carry out the following osmosis experiment:

Take four peeled potato halves and scoop each one out to make potato cups. One of these potato cups should be made from a boiled potato. Put each potato cup in a trough containing water. Now,

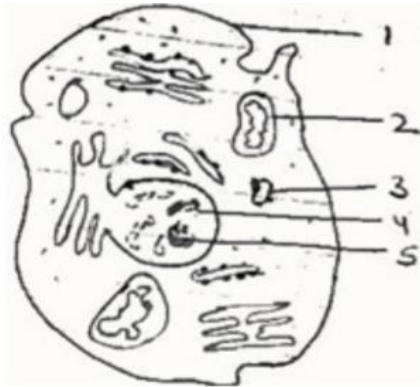
- (a) Keep cup A empty.
(b) Put one teaspoon sugar in cup B.
(c) Put one teaspoon salt in cup C.
(d) Put one teaspoon sugar in the boiled potato cup D.

Keep these for two hours. Then observe the four potato cups and answer the following:

- (i) Explain why water gathers in the hollowed portion of B and C.
(ii) Why is potato A necessary for this experiment?
(iii) Explain why water does not gather in the hollowed-out portions of A and D.

Case study based questions

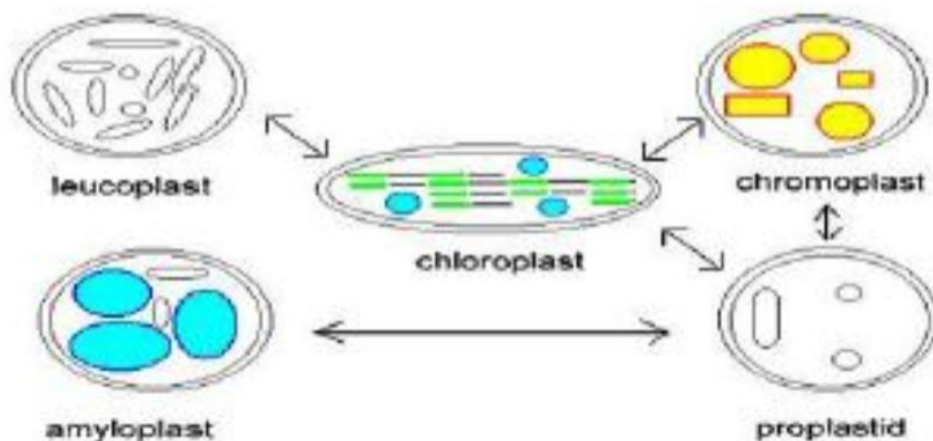
Q1. Observe the diagram of the cell below - answer the following



questions.

- i. Label the parts of the cell**
- ii. what function does part 1 perform?**
- iii. If the organelle 2 is removed from the cell, what effect is it going to make on the functions of the cell?**
- iv. Identify, whether it is plant cell or animal cell**
- v. Which structure is called 'Powerhouse of the cells'?**

Q2. Leucoplasts are colourless plastids. They store starch, oil, proteins. Chromoplasts are coloured plastids. They contain pigments. e.g. Chloroplasts contain green pigment present in the plant cell. Chromoplasts provide colour to various flowers and fruits.



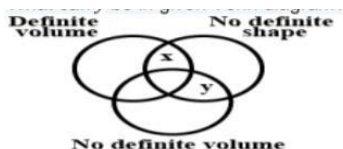
- a) What is the function of leucoplasts?
- b) Which plastids provide colour to fruits and flowers?
- c) Which plastids bring about the process of photosynthesis ?
- d) Write name of different plant parts in which different types of plastids are present**

Part-B (Chemistry)

1. Name the phenomenon which causes one crystal of potassium permanganate to turn a beaker of water purple.



- a. centrifugation. b. filtration. c. diffusion. d. sedimentation
2. Name the state of matter that 'has minimum inter-particle force of attraction'
- a. Solid. b. Liquid.
c. gas. d. All of these
3. A change of state of matter directly from solid to gas without changing into liquid state is called.
- (a) humidity. (b) sublimation
(c) fusion. (d) vaporisation
4. Which of the following pairs of species are fluids
- (a) Sugar, water. (b) Air, oil
©. Glucose, sugar. (d) Air, iron
5. A change of state of matter directly from solid to liquid is called
- (a) fusion (b) humidity
(c) sublimation (d) evaporation
6. S.I. unit of temperature is –
- (a) Pascal (b) Newton
(c) Kelvin (d) Celcius
7. Which is the correct form in the following
- (a) $0^{\circ}\text{C} = 275\text{k}$ (b) $0^{\circ}\text{C} = 273\text{k}$
(c) $0^{\circ}\text{C} = 274\text{k}$ (d) $0^{\circ}\text{C} = 276\text{k}$
8. Dry ice means as
- (a) Solid carbon dioxide
(b) liquid carbon dioxide.
(c) Calcium oxide
(d) Magnesium oxide
9. If the surface area is increased, then the rate of evaporation is –
- (a) decreased (b) remain same
(c) increased
(d) evaporation do not depend surface area.
10. What can y be in given Venn diagram?

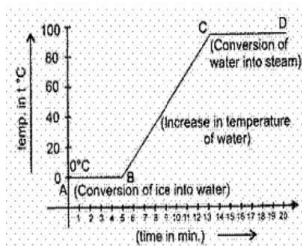


- a) Oxygen b) Shampoo
c) Plasticide d) Wax

Part-B

Case study

1. The heating curve of certain pure substances made of hydrogen and oxygen elements at one atm is shown in given figure.



- a. During the melting, temperature of substance does not change.
b. Temperature rises after all amount of ice melts.
c. At a specific temperature water starts boiling and temperature remains the same during the conversion of water into steam.

A. Which statement is correct regarding graph?

- a. Only (C) is correct.
b. All (A), (B) and (C) are correct
c. Only (B) is correct.
d. Only (A) is correct

B. When water boils, its temperature:

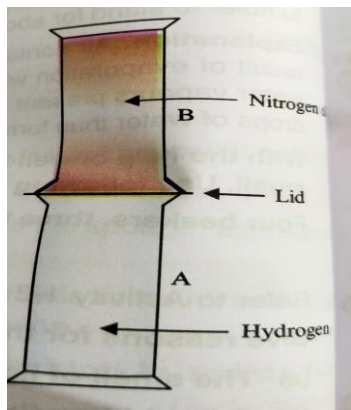
- a. remains the same. b. first increases and then decreases
c. decreases. d. increases

C. In the determination of boiling point of water correct reading in the thermometer is noted when

- a. water starts boiling. b. temperature starts rising
c. temperature becomes constant. d. whole of the water evaporates

D. Identify the substance & Convert its melting point and boiling point in Kelvin scale?

2. In certain experiment a gas jar B containing reddish brown gas, nitrogen dioxide is inverted over another jar A containing colourless hydrogen gas as shown. Now, the lid separating the two jars is removed.



Now answer the following:

- (i) After some time, what are the constituents in jar A?
- (ii) What colour will be observed in jar A and jar B?
- (iii) What is this phenomenon called?

Answer the following questions

1. What happens when an inflated air balloon is pricked with a pin? Name the property of the gaseous state exhibited by this observation.
2. Clothes dry fast in summer than in winters. Why?
3. Are the three states of matter inter-convertible? How can they interconnect?
4. Comment on the following statements:
 - A. Evaporation causes cooling.
 - B. Rate of evaporation of an aqueous solution decreases with increase in humidity.
 - C. Sponge though compressible is a solid.
 - D. Ice is solid at 0°C , while water is liquid at room temperature.
 - E. Sugar crystals dissolve faster in hot water than cold water.
 - F. Discuss the various factors which affect the rate of evaporation. Latent heat of evaporation of two liquids A and B is 100 J/kg and 150 J/kg respectively. Which one can produce more cooling effect and why?
 - G. Doctor advise to put strips of wet cloth on the forehead of a person having high fever.

Part-C (Physics)

MCQ

- Q.1. The direction of acceleration is the same as the direction of ____.
- (a) displacement
 - (b) change in velocity

(c) velocity

(d) all of these

Q.2. The area under a velocity-time graph gives _____.

(a) distance

(b) acceleration

(c) speed

(d) displacement

Q.3. _____ can be added algebraically.

(a) Accelerations

(b) Velocities

(c) Distances

(d) Any physical quantities

Q.4. A physical quantity which has both magnitude and direction is called a _____.

(a) scalar quantity

(b) vector quantity

(c) neither (a) nor (b)

(d) either (a) or (b)

Q.5. The distance-time graph of a body moving along a straight path in a single direction with uniform speed will be _____.

(a) along X-axis

(b) a line with positive slope

(c) parallel to X-axis

(d) None of these

Q.6. If a body travels unequal distances in equal intervals of time along a ___ path, the body is said to be in _____.

(a) curved, uniform motion

(b) pentagonal, uniform motion

(c) rectangular, uniform motion

(d) straight, non-uniform motion

Q.7. A freely falling body is said to be moving with _____.

(a) constant non-zero acceleration

(b) non-uniform motion

(c) zero velocity

(d) non-uniform acceleration

Q.8. A body travels along a straight path from its initial position to a point 20 m away and then returns back to its initial position. The change in the position of the body is ___ and the distance travelled is ___.

(a) 20 m, 40 m

(b) 0 m, 40 m

(c) 40 m, 40 m

(d) 0 m, 0 m

Q.9. The slope of a velocity-time graph gives _____.

(a) distance

(b) speed

(c) acceleration

(d) displacement

Q.10. The position-time graph of a body is parabolic, then the body is ___.

(a) in non-uniform motion

(b) in uniform acceleration

(c) at rest with some initial distance covered

(d) at rest with zero initial distance covered

case study question

Read the following and answer any four questions from (i) to (v)

Ques1-One day Rahul decided to go his office by his car. He is enjoying the driving along With listening the old songs. His car is moving along a straight road at a steady Speed. On a particular moment, he notices that the car travels 150 m in 5 seconds.

(i) What is its average speed ?

(a)20 m/s (b) 30 m/s (c) 10 m/s (d) 40 m/s

(ii) How far does it travel in 1 second ?

(a)20 m (b) 30 m (c) 10 m (d) 40 m

(iii) How far does it travel in 6 seconds ?

(a)120 m (b) 130 m (c) 180 m (d) 140 m

(iv) How long does it take to travel 240 m ?

(a)2s (b) 4s (c) 6s (d) 8s

(v) Which of the following statement is correct regarding velocity and speed of a moving body ?

(a) velocity of a moving body is always higher than its speed

(b) speed of a moving body is always higher than its velocity

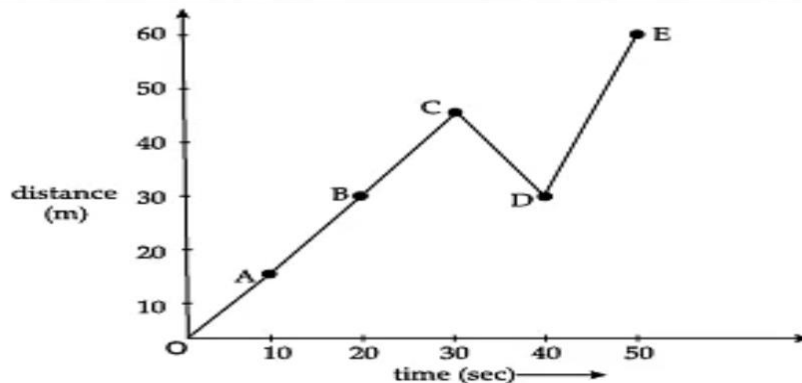
(c) speed of a moving body is its velocity in a given direction

(d) velocity of a moving body is its speed in a given direction

Ques2-The distance moved by a student at different time intervals of time, while walking to school, is given in the table below. The d-t graph for the motion of student is also shown. Study the table and graph and choose correct answers to the questions.

Ques1. What will be the speed if body travels a distance of 15 metres in

Time from the starting point (s)	0	10	20	30	40	50
Distance moved (m)	0	15	30	45	30	60



10 sec.?

- A. 0.5m/s
- B. 1.5m/s
- C. 5m/s
- D. 10m/s

Ques2. Name the physical quantities which can be measured by slope of d-t graph.

- A. Time
- B. Speed
- C. Displacement
- D. All of these

Ques3. What does shape of graph suggest about the type of motion of object.

- A. Circular motion
- B. Non uniform motion
- C. Uniform motion
- D. Uniform circular motion

Ques4. State a condition under which a body moves in such a way that magnitude of average velocity is equal to the average speed.

- A. When a body moves along a circular path
- B. When a body moves along a straight line
- C. When a body moves along a uniform circular motion
- D. None of these

Activity based questions

Ques1. Feroz and his sister Sania go to school on their bicycles. Both of them start at the same time from their home but take different times to reach the school although they follow the same route. The table shows the distances travelled by them at different times

Plot the distance-time graph for their motions on the same scale and interpret.

Distance covered by Feroz and Sania at different times on their bicycles		
Time	Distance travelled by Feroz (km)	Distance travelled by Sania (km)
8:00 am	0	0
8:05 am	1.0	0.8
8:10 am	1.9	1.6
8:15 am	2.8	2.3
8:20 am	3.6	3.0
8:25 am	–	3.6

Ques2. The data regarding the motion of two different objects P and Q is given in the following table. Examine them carefully and state whether the motion of the objects is uniform or non-uniform.

Time	Distance travelled by P	Distance travelled by Q
9.30am	10	12
9.45am	20	19
10am	30	23
10.15am	40	35
10.30am	50	37
10.45am	60	41
11am	70	44



* Do your assignment on assignment sheets.

ASSIGNMENT

1. Express $0.\overline{6} + 0.\overline{7}$ (bar on 7) in the form of $\frac{p}{q}$, where p and q are integers and $q \neq 0$.

2. Find the value of a and b if $\frac{\sqrt{2} + \sqrt{3}}{3\sqrt{2} - 2\sqrt{3}} = 2 - b\sqrt{6}$

3. If $a = 5 + 2\sqrt{6}$ and $b = \frac{1}{a}$ then what will be the value of $a^2 + b^2$.

4. Simplify by rationalising the denominator.

$$\frac{\sqrt{5}-2}{\sqrt{5}+2} - \frac{\sqrt{5}+2}{\sqrt{5}-2}$$

5. If $x = \frac{\sqrt{3} + \sqrt{2}}{\sqrt{3} - \sqrt{2}}$, find value of $x^2 + \frac{1}{x^2}$

6. If $\sqrt{2} = 1.414$ and $\sqrt{5} = 2.236$, find the value of $\frac{\sqrt{10} - \sqrt{5}}{2\sqrt{2}}$ up to three decimal places.

7. Evaluate the following expression :

$$(i) \left(\frac{625}{81}\right)^{-1/4} \quad (ii) \frac{\sqrt{24}}{8} + \frac{\sqrt{54}}{9} \quad (iii) (15625)^{1/6}$$

8. If $x = \frac{1}{2 - \sqrt{3}}$, find the value of $x^3 - 2x^2 - 7x + 5$

9. If both $x-2$ and $x - \frac{1}{2}$ are factors of $px^2 + 5x + r$ then show that $p=r$.

10. If $x - \frac{1}{x} = \frac{1}{2}$ then find value of $4x^2 + \frac{4}{x^2}$

11. If $a + b + c = 14$, $a^2 + b^2 + c^2 = 74$ and $a^3 + b^3 + c^3 = 434$, find value of abc .

12. Factorise : (i) $x^9 - y^9$ (ii) $a^4 + a^2b^2 + b^4$

13. Divide $3y^4 - 8y^3 - y^2 - 5y - 5$ by $y-3$ and find quotient and remainder.

14. The perimeter of an Isosceles triangle is 32 cm. The ratio of the equal sides to its base is 3:2 . Find the area of triangle.
15. A square and an equilateral triangle have the same perimeter. If the diagonal of the square is $12\sqrt{2}$ cm then find the area of triangle.
16. (a) The area of isosceles right triangle is 200 m^2 . Find its hypotenuse.
- (b) The area of an equilateral triangle is $100 \sqrt{3} \text{ m}^2$. Find the perimeter of triangle.
17. The following table gives distribution of students of two sections according to the marks obtained by them.

SECTION A		SECTION B	
Marks	Frequency	Marks	Frequency
0-10	2	0-10	5
10-20	12	10-20	11
20-30	18	20-30	15
30-40	13	30-40	12
40-50	5	40-50	7

Represent the marks of students of both the sections on the same graph by two frequency polygons.

CASE STUDY QUESTIONS

18. On one day, principal of a particular school visited the classroom. Class teacher was teaching the concept of polynomial to students. He was very much impressed by her way of teaching. To check, whether the students also understand the concept taught by her or not, he asked various questions to students. Some of them are given below. Answer them.

- a) Find the value of k, if $(x - 1)$ is a factor of $4x^3 + 3x^2 - 4x + k$.
- b) Find the zeroes of the polynomial $x^2 + 4x + 2$.
- c) Identify the type of polynomial: $ax^2 + bx + c$, if $a = 0$.

19. A food pyramid is a representation of the optimal number of servings to be eaten each day from each of basic food groups. It is designed to make healthy eating easier. Health care NGO in India working for underprivileged children. In rural areas health statistics are continue to poor. In this direction Health statistics are continue to poor. In this direction Health Care India has made the children

under the age of 13 aware of “food pyramid” by telling the importance of different food groups such as carbohydrates, fats, vitamins, proteins, minerals etc. The models of food pyramid which they have used triangle with sides 10 cm, 10 cm, 12 cm.

- Find the semi perimeter of triangle .
- Find the area of food pyramid which is in shape of triangle.
- Find the height of food pyramid.

20. In an effort to provide high-quality and safe playgrounds for kids, our reputable manufacturers adhere to the playground safety guidelines set forth by the Indian Consumer Product Safety Commission (CPSC) and the Indian Society for Advancement of Materials and Processing Engineering (ISAMPE). These organisations set the guidelines for determining the types of playground equipment that is appropriate for kids within specific age groups: 2-3 years, 3-5 years, 5-7 years, 7-10 years, 10-15 years, and 15-17 years. A random survey of the number of children of various age groups playing in a park was found as follows:

Age (in years)	Number of children
1 - 2	5
2 - 3	3
3 - 5	6
5 - 7	12
7 - 10	9
10 - 15	10
15 - 17	4

- Find the class limit of third class interval .
- Find the class mark of 15-17
- Find adjusted frequency of 5-7 and 7-10.



(ੳ) ਗਿਆਨ ਤੇ ਵਿਚਾਰ (ਅਣਡਿੱਠਾ ਪੈਰੂ)

ਅਧਿਆਪਕ ਦੀ ਭੂਮਿਕਾ ਬਹੁਤ ਮਹੱਤਵਪੂਰਨ ਰਹੀ ਹੈ। ਅੱਜ ਦੀ ਦਸ਼ਾ ਵਿਚ ਵੀ ਜੀਵਨ ਮੁੱਲਾਂ ਦੀ ਰੱਖਿਆ ਦਾ ਭਾਰ ਅਧਿਆਪਕ ਦੇ ਸਿਰ ਹੀ ਮੜ੍ਹਿਆ ਜਾਂਦਾ ਹੈ। ਵਰਤਮਾਨ ਸਥਿਤੀ ਵਿਚ ਜੀਵਨ-ਮੁੱਲਾਂ ਦੇ ਸੰਸਥਾਪਨ ਦਾ ਭਾਰ ਅਧਿਆਪਕ 'ਤੇ ਪਹਿਲਾਂ ਨਾਲੋਂ ਵਧੇਰੇ ਹੋ ਗਿਆ ਹੈ ਕਿਉਂਕਿ ਅੱਜ ਦਾ ਪਰਿਵਾਰ ਬਾਲਕ ਲਈ ਸਦਗੁਣਾਂ ਦੀ ਪਾਠਸ਼ਾਲਾ ਵਰਗੀ ਸੰਸਥਾ ਨਹੀਂ ਰਿਹਾ ਹੈ, ਜਿੱਥੇ ਬਾਲਕ ਇਕ ਸੰਤੁਲਿਤ ਵਿਅਕੀਤਵ ਦੀ ਸਿੱਖਿਆ ਗ੍ਰਹਿਣ ਕਰ ਸਕੇ। ਅਧਿਆਪਕ ਸਕੂਲ ਦੀ ਚਾਰ ਦੀਵਾਰੀ ਵਿਚ ਬੱਚੇ ਲਈ ਇਕ ਆਦਰਸ਼ ਹੁੰਦਾ ਹੈ। ਅਧਿਆਪਕ ਦੀ ਹਰ ਗਤੀ-ਵਿਧੀ 'ਤੇ ਬੱਚਿਆਂ ਦੀ ਨਿਗਾਹ ਰਹਿੰਦੀ ਹੈ। ਪ੍ਰਾਇਮਰੀ ਪੱਧਰ ਦੇ ਬੱਚੇ ਤਾਂ ਆਪਣੇ ਅਧਿਆਪਕ ਦੇ ਨਿਰਦੇਸ਼ ਨੂੰ ਬ੍ਰਹਮ-ਵਾਕ ਮੰਨ ਕੇ ਉਸਦੀ ਪਾਲਣਾ ਕਰਦੇ ਹਨ। ਇੱਥੋਂ ਤਕ ਕੇ ਇਹ ਬੱਚੇ ਆਪਣੇ ਮਾਤਾ-ਪਿਤਾ ਨਾਲੋਂ ਅਧਿਆਪਕ ਦੀਆਂ ਗੱਲਾਂ ਨੂੰ ਵਧੇਰੇ ਮਹੱਤਵ ਦਿੰਦੇ ਹਨ। ਇਸ ਵਰਗ ਦੇ ਬੱਚੇ ਕਿਸੇ ਹੋਰ ਦੀਆਂ ਗੱਲਾਂ ਵਿਚ ਉਨੀ ਰੁਚੀ ਨਹੀਂ ਲੈਂਦੇ ਜਿੰਨੀ ਉਹ ਆਪਣੇ ਅਧਿਆਪਕ ਦੀਆਂ ਗੱਲਾਂ ਵਿਚ ਲੈਂਦੇ ਹਨ। ਮੁੱਢਲੀ ਪੱਧਰ ਦੇ ਬੱਚਿਆਂ ਦਾ ਮਨ ਨਿਰਮਲ ਹੁੰਦਾ ਹੈ। ਇਹੋ ਸਮਾਂ ਬੱਚਿਆਂ ਵਿਚ ਜੀਵਨ-ਮੁੱਲਾਂ ਦੇ ਸੰਸਥਾਪਨ ਕਰਨ ਦਾ ਉੱਤਮ ਕਾਲ ਹੈ। ਇਸ ਅਵਸਥਾ ਵਿਚ ਬੱਚਿਆਂ ਦੇ ਪਵਿੱਤਰ ਤੇ ਦੇਸ਼-ਰਹਿਤ ਮਨ 'ਤੇ ਅਧਿਆਪਕ ਜਿਹੇ-ਜਿਹੇ ਭਾਵ ਅੰਕਿਤ ਕਰਨਾ ਚਾਹੇ, ਕਰ ਸਕਦਾ ਹੈ। ਇਸ ਸਮੇਂ ਮਨ 'ਤੇ ਪੈਣ ਵਾਲਾ ਪ੍ਰਭਾਵ ਸਥਾਈ ਹੁੰਦਾ ਹੈ। ਇਸ ਲਈ ਇਸ ਪੱਧਰ 'ਤੇ ਸਿੱਖਿਆ ਦੇ ਕੰਮ ਵਿਚ ਲੱਗੇ ਅਧਿਆਪਕਾਂ ਨੂੰ ਆਪਣੇ ਬੱਚਿਆਂ ਨੂੰ ਛੋਟੀਆਂ-ਛੋਟੀਆਂ ਸਿੱਖਿਆਦਾਇਕ ਕਹਾਣੀਆਂ ਸੁਣਾ ਕੇ ਉਹਨਾਂ ਵਿਚ ਜੀਵਨ-ਮੁੱਲਾਂ ਦਾ ਬੀਜ-ਰਪਣ ਕਰਨਾ ਚਾਹੀਦਾ ਹੈ।

*ਹੇਠ ਲਿਖੇ ਪ੍ਰਸ਼ਨਾਂ ਦੇ ਉੱਤਰ ਆਪਣੇ ਸ਼ਬਦਾਂ ਵਿਚ ਲਿਖੋ:-

1. ਅਧਿਆਪਕ ਨੂੰ ਯੁੱਗ ਨਿਰਮਾਤਾ ਕਿਉਂ ਕਿਹਾ ਜਾਂਦਾ ਹੈ?
2. ਵਰਤਮਾਨ ਕਾਲ ਵਿੱਚ ਅਧਿਆਪਕ ਉੱਪਰ ਜੀਵਨ ਮੁੱਲਾਂ ਦੇ ਸੰਸਥਾਪਨ ਦਾ ਭਾਰ ਵੱਧ ਗਿਆ ਹੈ ਇਸ ਵਿੱਚ ਬੱਚੇ ਦੇ ਪਰਿਵਾਰ ਦਾ ਕੀ ਯੋਗਦਾਨ ਹੈ?
3. ਮੁੱਢਲਾ ਪੱਧਰ ਬੱਚਿਆਂ ਵਿਚ ਜੀਵਨ ਮੁੱਲਾਂ ਦੇ ਸੰਸਥਾਪਨ ਦਾ ਉੱਤਮ ਕਾਲ ਹੈ ਕਿਉਂ?
4. ਉਪਰੋਕਤ ਲਿਖੇ ਪੈਰੇ ਨੂੰ ਪੜ੍ਹ ਕੇ ਢੁਕਵਾਂ ਸਿਰਲੇਖ ਲਿਖੋ?

(ਅ) ਕਾਵਿ-ਟੁਕੜੀ ਪੜ੍ਹ ਕੇ ਪੁੱਛੇ ਗਏ ਪ੍ਰਸ਼ਨਾਂ ਦੇ ਉੱਤਰ ਦਿਓ :

ਸੁੱਖ-ਨੀਂਦੇ ਜੇ ਸੁੱਤਾ ਚਾਹੋਂ, ਵੱਸ ਨਾ ਪਈ ਅਮੀਰਾਂ ਦੇ,
ਬੰਦੀ ਜਨ ਦੇ ਹਲੂਏ ਨਾਲੋਂ, ਟੁਕੜੇ ਭਲੇ ਫਕੀਰਾਂ ਦੇ,
ਵਿੱਚ ਗੁਲਾਮੀ ਹੋਇ ਖੁਨਾਮੀ, ਸੁੱਕਣ ਲਹੂ ਸਰੀਰਾਂ ਦੇ,
ਸੀਨੇ ਹੱਥ, ਧੋਣ ਨਿਹੁੜਾਈ, ਖੜ੍ਹੇ ਵਾਂਗ ਤਸਵੀਰਾਂ ਦੇ,
ਕਰ ਗੁਜ਼ਰਾਨ ਸੁਤੰਤਰਤਾ ਵਿੱਚ, ਪਹਿਨ ਗੋਦੜੇ ਲੀਰਾਂ ਦੇ।

*ਪ੍ਰਸ਼ਨ ਉੱਤਰ:-

1. ਕਵੀ ਕਿਹੜਾ ਜੀਵਨ ਜਿਉਣ ਲਈ ਕਹਿ ਰਿਹਾ ਹੈ?
2. ਬੰਦੀ ਜਨ ਭਾਵ ਗੁਲਾਮੀ ਦੇ ਜੀਵਨ ਨਾਲੋਂ ਕੀ ਚੰਗਾ ਹੈ ਅਤੇ ਕਿਵੇਂ?
3. ਸੁਖੀ ਜੀਵਨ ਗੁਜ਼ਾਰਨ ਲਈ ਕੀ ਕਰਨ ਦੀ ਲੋੜ ਹੈ?

(ਬ) ਵਿਆਕਰਨ :-

1. ਹੇਠ ਲਿਖੇ ਮੁਹਾਵਰਿਆਂ ਦੇ ਅਰਥ ਦਸਦੇ ਹੋਏ ਉਹਨਾਂ ਦੇ ਵਾਕ ਬਣਾਉ:-

ਇਲਮ ਦਾ ਕੀੜਾ, ਸੱਕ ਲਾਹੁਣੇ, ਹੂੰਝਾ ਫੇਰ ਜਿੱਤ ਹੋਈ

2. ਵਿਸਮਿਕ ਤੇ ਕਿਸਮਾਂ

*ਹੇਠ ਲਿਖੇ ਵਾਕਾਂ ਦੀਆਂ ਖਾਲੀ ਥਾਵਾਂ ਵਿੱਚ ਢੁਕਵੇਂ ਵਿਸਮਿਕ ਸ਼ਬਦ ਦੀ ਵਰਤੋਂ ਕਰੋ:- * _____! ਅੱਜ ਤਾਂ ਕੀੜੀ ਦੇ ਘਰ ਨਰਾਇਣ ਆਉਣ ਵਾਲੀ ਗੱਲ ਹੋਈ ਹੈ।

* ਸੱਤਿਆਨਾਸ! ਸ਼ਬਦ ਕਿਹੋ ਜਿਹੇ ਵਿਸਮਿਕ ਦੇ ਉਦਾਹਰਣ ਹੈ?

3. ਕਿਰਿਆ ਤੇ ਕਿਸਮਾਂ

* ਕਿਰਿਆ ਕਿਹੜੇ ਸ਼ਬਦਾਂ ਤੋਂ ਬਣਦੀ ਹੈ।

* ਪੰਜਾਬੀ ਵਾਕ ਬਣਤਰ ਵਿੱਚ ਕਿਰਿਆ ਦੇ ਨਾਲ-ਨਾਲ ਕਿਹੜੇ ਹੋਰ ਮੁੱਢਲੇ ਤੱਤ ਕਾਰਜਸ਼ੀਲ ਹੁੰਦੇ ਹਨ?

4. ਆਕਾਸ਼, ਗਿਰਝ, ਹੰਕਾਰ, ਜੁੰ, ਤਸਵੀਰ, ਮੀਂਹ, ਪਿੱਤਲ, ਲੇਹਾ, ਸ਼ਬਦਾਂ ਵਿੱਚੋਂ ਕੇਵਲ ਪੁਲਿੰਗ ਸ਼ਬਦ ਚੁਣ ਕੇ ਲਿਖੋ।

* 'ਘੁਮਿਆਰ ਨੇ ਖੇਤੇ ਤੇ ਟੇਕਰੀ ਰੱਖੀ ਸੀ।' ਵਾਕ ਨੂੰ ਇਸਤਰੀ ਲਿੰਗ ਵਾਕ ਵਿੱਚ ਬਦਲੋ

5. ਹੇਠ ਲਿਖੇ ਵਿਕਲਪਾਂ ਵਿੱਚੋਂ ਸਹੀ ਵਿਰੋਧੀ ਸ਼ਬਦਾਂ ਦੇ ਜੋੜ ਚੁਣੋ।

1.ਸੱਖਣਾ/ਖਾਲੀ 2.ਸੱਖਣਾ/ਸੁੱਖਣਾ 3.ਸੱਖਣਾ/ਉਣਾ 4.ਸੱਖਣਾ/ਭਰਿਆ

* ਸ਼ਬਦ ਬੋਧ ਦੇ ਅਨੁਸਾਰ ਵਿਰੋਧੀ ਸ਼ਬਦਾਂ ਦੀ ਵਿਆਖਿਆ ਕਿਹੜੇ ਭਾਵ ਵਿੱਚ ਕੀਤੀ ਜਾਂਦੀ ਹੈ।

1.ਸ਼ਬਦ ਬਣਤਰ 2.ਸ਼ਬਦ ਸ਼੍ਰੇਣੀ 3.ਅਰਥ ਸੰਬੰਧ 4.ਪਦ ਵੰਡ

6.ਸਹੀ ਸ਼ਬਦ ਚੁਣ ਕੇ ਭਰੋ : * _____ ਵਿੱਚ ਕੁੱਕੜ ਨੇ _____ ਦਿੱਤੀ।

(ੳ) ਬਾਘ/ (ਅ) ਬਾਂਘ/ (ੲ) ਬਾਗ਼

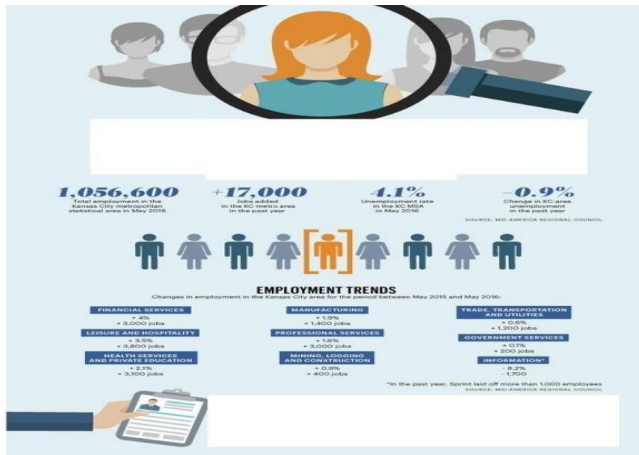
* _____ ਮੇਰਾਂ ਨੇ _____ ਨਹੀਂ ਸੀ ਪਾਈਆਂ।

(ੳ) ਪਹਿਲਾਂ/ (ਅ) ਪੈਲਾ/ (ੲ) ਪੈਲਾਂ



Occupying an important position on the country's map both Punjab and Orissa has own unique contribution to country's economic growth, Orissa's rich mineral reserves constitute 28% Iron ore, 24% coal, 59% Bauxite and 98% Chromite of India's total deposits..Whereas Punjab is called as 'Granary of India'.It produces India's 25% wheat and 10% of rice. Looking at the areas contribution of both states through these Industries

Find out what kind of professionals each state requires. This is a group project students will choose their own group members and present the requirement in form of Graphics as shown below. Each group will write Class/section and Name of Group members on the Graphic.



Kindly upload your Graphics in drive with link-

<https://drive.google.com/drive/folders/1ocHknBus-nav9pUP7IOdEeYKygUSr-vZ?usp=sharing>



The submission link of holidays homework of Artificial Intelligence is

<https://forms.gle/f8JKgY59pg48A7t9A>

Q1:- Create an App on MIT App Inventor on “Tourist App for Odisha”.

The Rules and regulations are as follows:-

- The App must be having at least 5-6 screens.
- The App must be imported and send through google form link mentioned above.

Q2:- Create a website on “ CHILD CANCER CARE”.

The Rules and regulations are as follows:-

- The Home Page of website should be named as Index.html
- Website must be Responsive and contain 5-6 webpages.
- Website made using Online Platform will be ineligible
- Platform- Weebly, Wix.
- The Video of Website should be shared through google form link mentioned above.



The submission link of holidays homework of Information Technology is

<https://forms.gle/f8JKgY59pg48A7t9A>

Q1:- Create a pamphlet on “Tourist Places in Odisha” in LibreOffice

The Rules and regulations are as follows:-

- c) The Pamphlet must be having all the tourist places with their proper description.
- d) The pamphlet must be shared through google form link mentioned above.

Q2:- Create a website on “ CHILD CANCER CARE”.

The Rules and regulations are as follows:-

- f) The Home Page of website should be named as Index.html
- g) Website must be Responsive and contain 5-6 webpages.
- h) Website made using Online Platform will be ineligible
- i) Platform- Weebly, Wix.
- j) The Video of Website should be shared through google form link mentioned above.



Instructions:

- Do your work on A 4 size colour sheet.
- Submit holidays homework in a folder with introduction and index.

*Your friend Mr. Ajay wishes to throw a party for his Friends on his Birthday which falls six months later .

He has saved Rs 500 from his pocket money every Month, so that he can celebrate his birthday with Rs

3000. Plan a budget for him to throw a party.

*Find MICR and IFSC of five banks from the Websites

Art integrated project:

*Make a collage of 5 items of goods and services each.