

## Answer Key

## Class 4

### Assignment Chapter Adaptation in Animals

#### Animals and their young ones

1(b) milk from their mother

2.(d) All of the above.

3(a) Both assertion and reason are true and the reason is the correct explanation.

4 (a) Both assertion and reason are true and

5( similarities)

1.Protection -Humans and animals protect their babies from harm.

2. Feeding- both animals and humans feed their babies.

3- Shelter Humans and animals provide a safe home for their babies

4. Love and Care-Both humans and animals love and care for their babies

6. Parasites like tapeworm, lice live inside outside of living things called hosts They obtain food by host's blood, eating hosts food, living on host's skin. Parasites make host feel weak, Cause skin problems, give host Stomach problems.

7.Animals develop protective adaptations to

1.Avoid being eaten by predators.

2.Protect themselves from harsh weather.

3.) protect themselves from physical harm

4) help-themselves to reproduce

8.Animals nurse their young to feed their babies .It is important for young animals because-

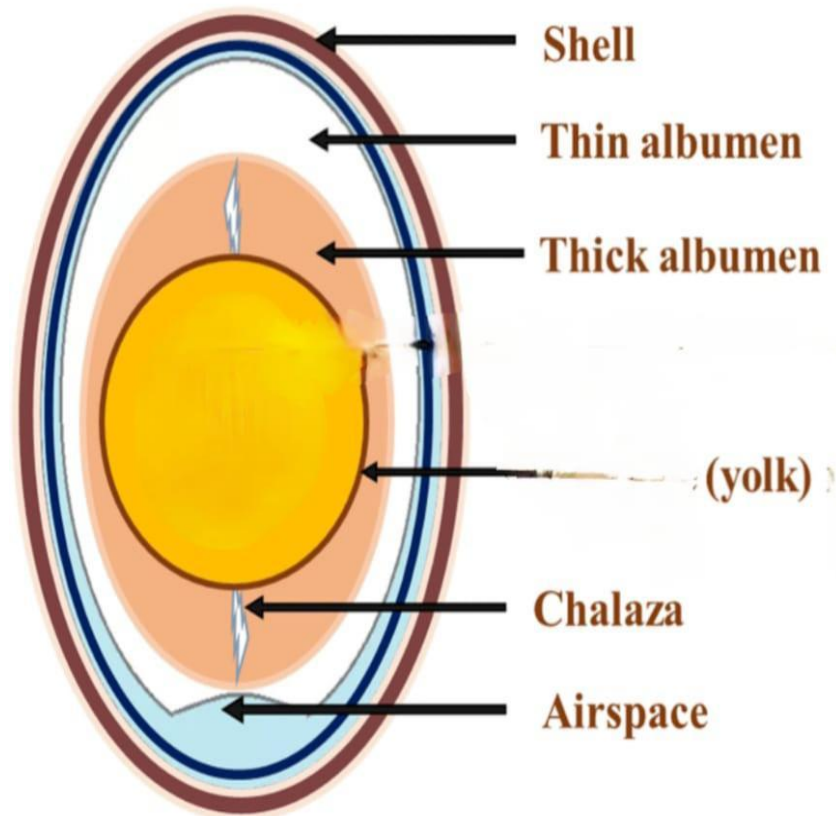
1. It provides nutrition to babies tis grow.

2. It keeps babies warm.

3. It helps them to teach important, survival skills

4. It keeps them safe and healthy.

9.



1. Egg shell- It is protective an outer, thin proteins.

2. Albumin- It lies with in the egg shell and is a white- jelly-like Substance. It is rich in proteins.

3. Yolk It is the yellow inner part of the egg and is rich in fats, Vitamins and minerals. It provides food for the growing chick or embryo.

10.) Polar bears have thick fur to keep them warm, they have a fat layer under skin which They have beeps large panes them warm. Paves, sharp claws and small ears to adapt in their surrounding

(2) Polar bears have white fur to camouflage in which their white fur blends with Snow and ice. This adaptation Helps them to save from their enemies.

3.) Large pawns of polar bears helps them to hunt, travel long distances, keeps them warm and escape predators.