

**Chapter –6,10,13,18**

**Q1 The tiny air sacs in the lungs where the exchange of gases takes place are called:**

- (a) Bronchi**
- (b) Alveoli**
- (c) Bronchioles**
- (d) Trachea**

**Q 2 Paheli's mother made a concentrated sugar syrup by dissolving sugar in hot water. On cooling, crystals of sugar got separated. This indicates a:**

- (a) physical change that can be reversed**
- (b) chemical change that can be reversed**
- (c) physical change that cannot be reversed**
- (d) chemical change that cannot be reversed**

**ASSERTION – REASON QUESTIONS:**

- (a) Both A and R are true and R is the correct explanation of A.**
- (b) Both A and R are true but R is not the correct explanation of A.**
- (c) A is true but R is false.**
- (d) A is false but R is true.**

**Q 3 Assertion (A) - wire used for making electric circuit normally become hot.  
Reason (R) - there is due to heating effect of the electric current.**

**Q 4 Assertion (A) : We should not excrete in the open.  
Reason (R) : Poor sanitation and contaminated water cause a number of diseases.**

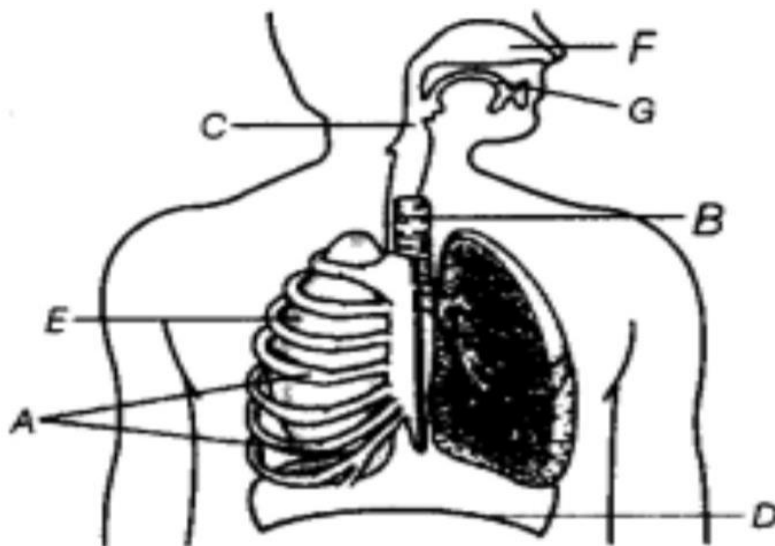
**Q 5 Why do people exhale air on the surface of spectacles to clean it ?**

**Q 6 Digestion is chemical change? Explain why?**

**Q 7: What are vermi-processing toilets? For which purpose is it used?**

**Q 8 Why are the Eucalyptus trees planted along sewage ponds?**

**Q 9 : Observe the given diagram of human respiratory system. List the organs from (A) to (G)**



**CASE STUDY BASED QUESTION:**

**Q10 Electricity is the form of energy which we use electricity for many purposes to make our tasks easier. Electricity makes it possible to light our homes, roads, offices, markets and factories even after sunset. A bulb has a thin wire that gives off light. The wire of an electric bulb gets heated to such a high temperature that it starts glowing. Nowadays The fluorescent CFLs and LED bulbs are being used for lighting as they are considered to much better than incandescent electric bulbs. However, damaged CFLs need to be disposed off safely. It is advised to use electrical appliances and gadgets, which are electricity efficient. It also advisable to use ISI marked electrical appliances and gadgets**

**Q.1. What is the name of thin wire in the electric bulb?**

**Q 2 CFLs and LED stand for:**

**Q 3 What is a disadvantage of using incandescent electric bulbs?**

**Q 4 How LED bulbs are better than incandescent bulbs and CFLs?**